

## BRASS Y STRAINER WITH DRAINING FEMALE BSP ACS 4MS

Brass Y strainer with draining valve for water distribution and watering.

Thanks to the draining valve, impurities are evacuated.

Mesh 850 $\mu$  stainless steel AISI 304 screen.

EPDM gasket.

Suitable for drinking water thanks to the French ACS certificate.



**Size :** DN1/2" to DN2"

**Connection :** Female BSP

**Min Temperature :** +0°C

**Max Temperature :** +120°C

**Max Pressure :** 16 Bars

**Specifications :** For drinking water (ACS)

Removable stainless steel filter

Mesh 850 $\mu$

With draining valve

**Materials :** Brass body CW617N-4MS according to EN12165

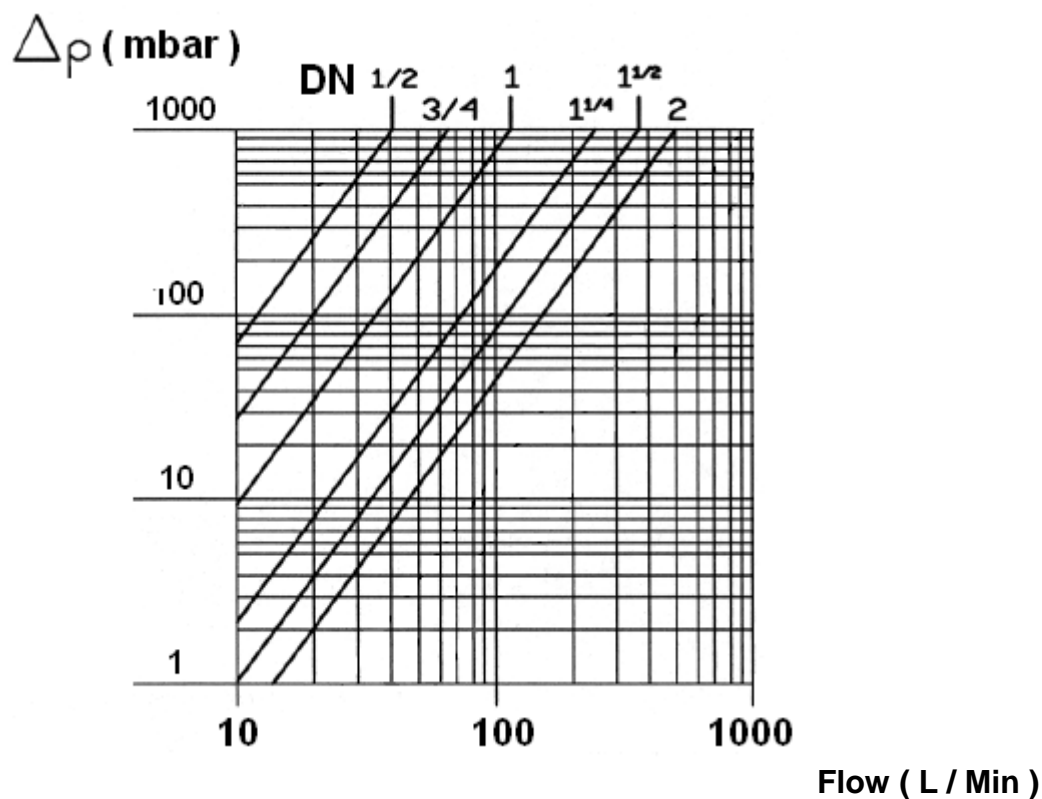
## BRASS Y STRAINER WITH DRAINING FEMALE BSP ACS 4MS

**SPECIFICATIONS :**

- Brass CW617N-4MS
- Stainless steel removable filter
- Female / female threaded BSP
- With draining valve
- Horizontal or vertical position (respect the flow direction indicated by the arrow )
- Mesh 8,5/10° mm ( 850  $\mu$  )

**USE :**

- Water distribution and watering
- Min Temperature Ts : + 0°C
- Max Temperature Ts : + 120°C
- Max Pressure Ps : 16 bars

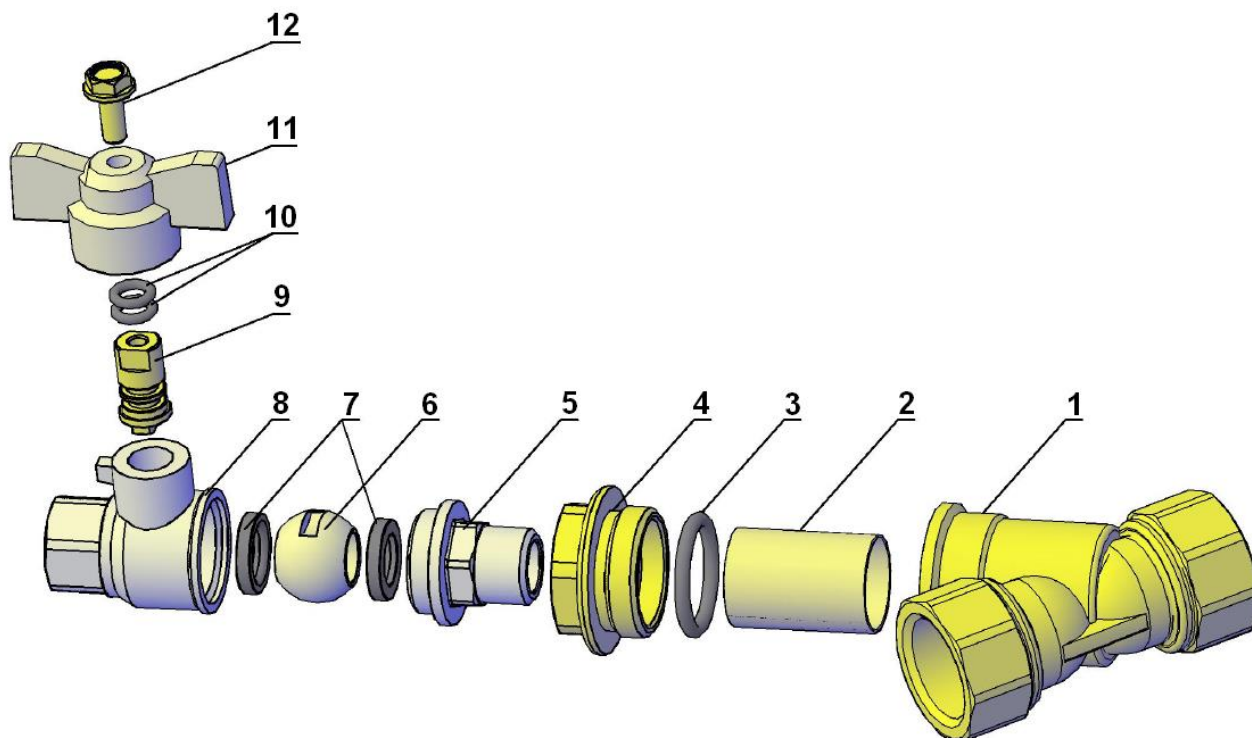
**HEAD LOSS GRAPH :****FLOW COEFFICIENT Kvs ( M3 / h ) :**

DN	1/2"	3/4"	1"	1"1/4	1"1/2	2"
Kvs ( m3/h )	4.4	10.22	12.52	14.44	26.54	28.14

## BRASS Y STRAINER WITH DRAINING FEMALE BSP ACS 4MS

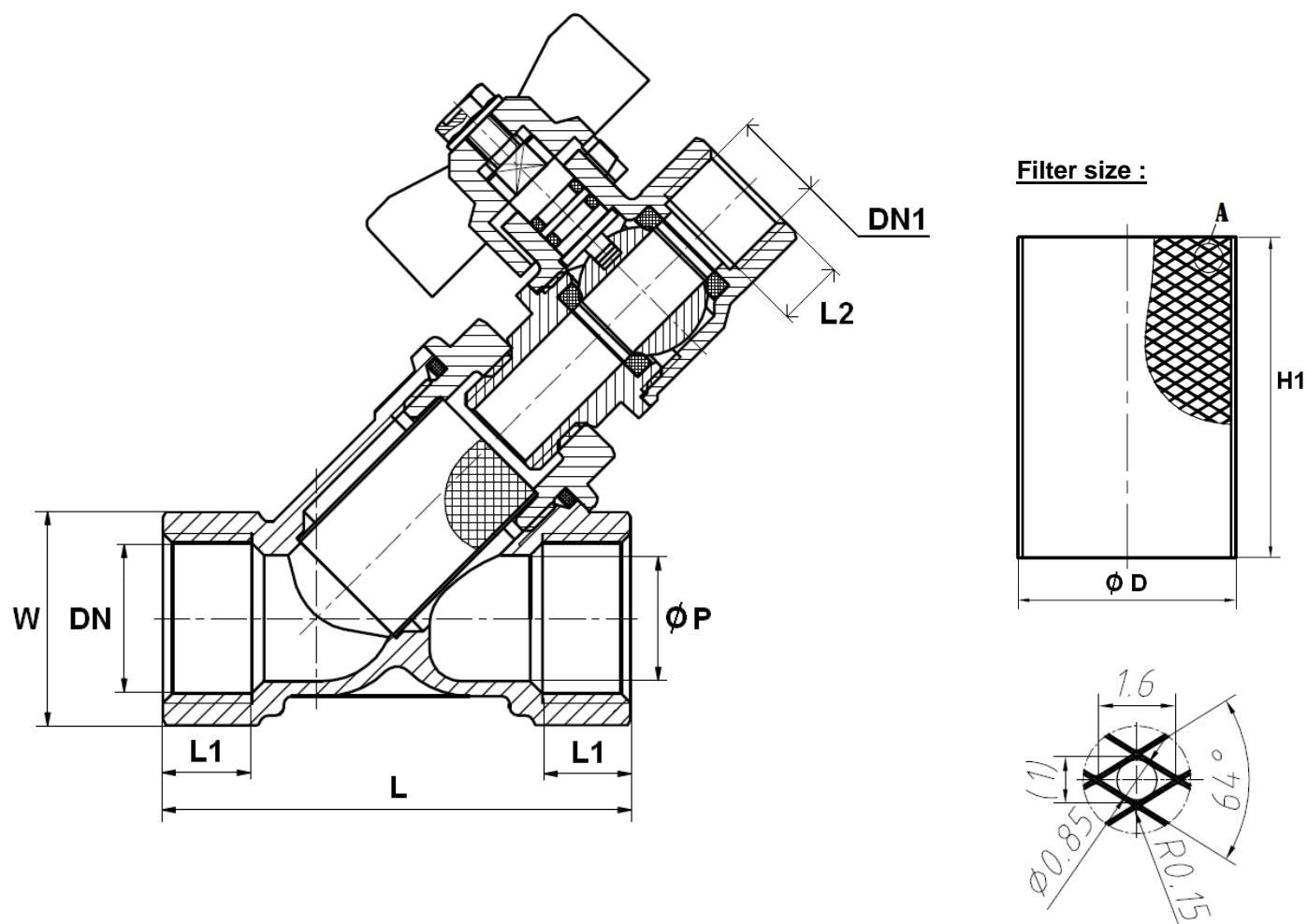
**RANGE :**

- Y Strainer female cylindrical BSP ends from DN 1/2" to DN 2"

**MATERIALS :**

Item	Designation	Materials
1	Body	Brass CW617N-4MS according to EN 12165
2	Filter	AISI 304
3	O ring	EPDM
4	Bonnet	Brass CW617N-4MS according to EN 12165
5	Bonnet	Brass CW 617 N according to EN 12165
6	Ball	Brass CW 617 N according to EN 12165 chromed
7	Seat	PTFE
8	Body	Brass CW 617 N according to EN 12165
9	Stem	Brass CW 617 N according to EN 12165
10	O ring	NBR
11	Handle	Aluminium
12	Handle screw	Steel

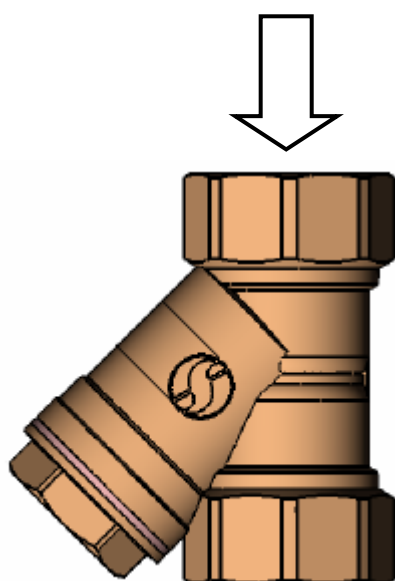
## BRASS Y STRAINER WITH DRAINING FEMALE BSP ACS 4MS

SIZE ( in mm ) :

DN	1/2"	3/4"	1"	1"1/4	1"1/2	2"
Ø P	15.6	20	26	32	42	52
L	58	68	75	90	108	130
L1	11	12	14	16.5	18	20
L2	9	9	9	9	9	9
DN1	1/4"	3/8"	3/8"	3/8"	3/8"	3/8"
W (on flat)	25	31	38	47	54	67
Ø D	18.5	23.5	27.5	33.5	42.5	52.5
H1	25	40	40.5	46	54	63
Weight (in Kg)	0.24	0.32	0.44	0.55	0.9	1.4
Ref.	211004	211005	211006	211007	211008	211009

**BRASS Y STRAINER WITH DRAINING FEMALE BSP ACS 4MS****STANDARDS :**

- Manufacturer certified ISO 9001 :2015
- DIRECTIVE 2014/68/EU : Products excluded from directive ( Article 1, § 2.b )
- Threaded female BSP cylindrical according to ISO 228-1
- French water agreement **A.C.S. N° 18 ACC NY 396**

**INSTALLATION POSITIONS :****Vertical position ( descendand fluid )****Horizontal position**